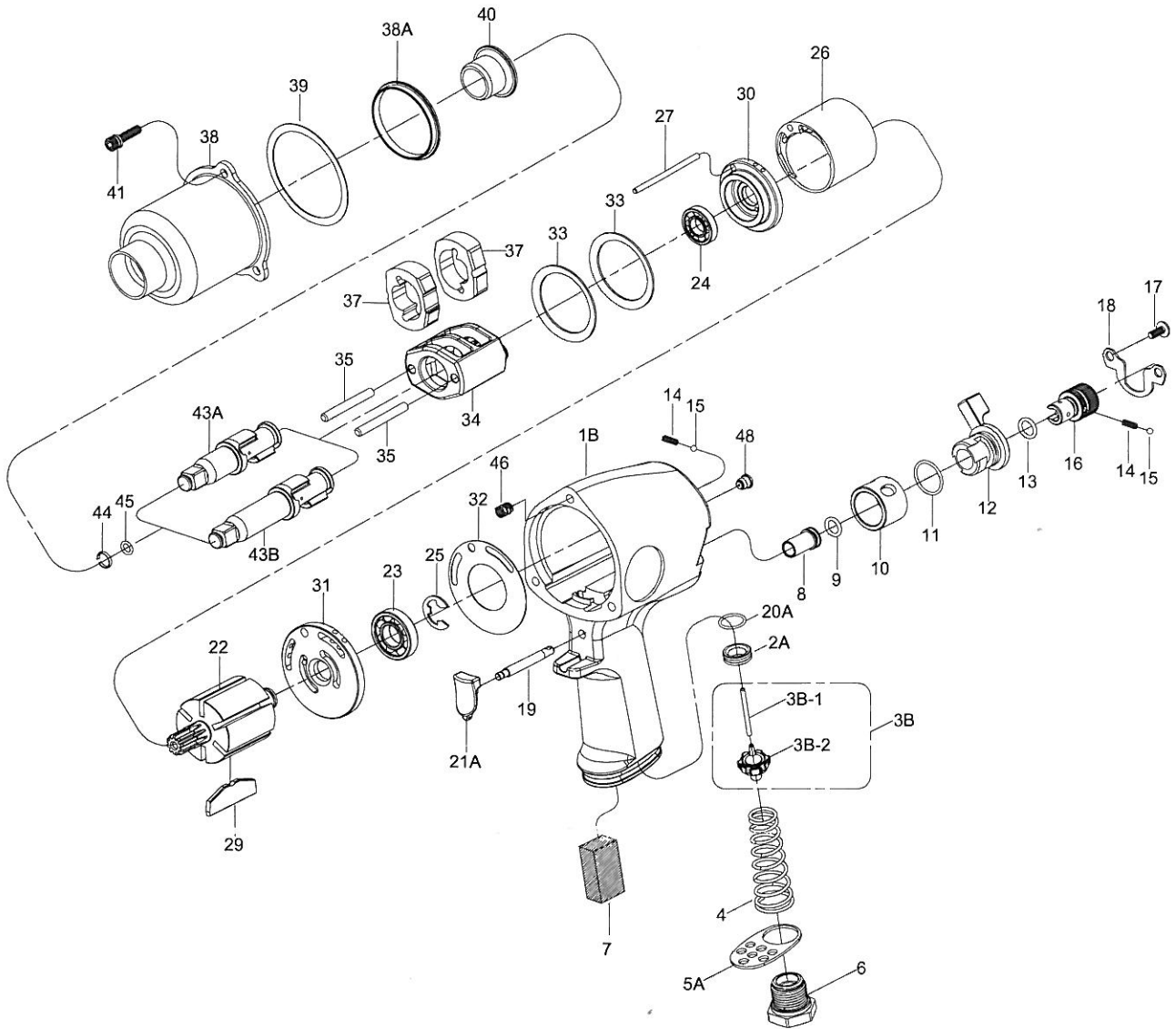


# 1/2" SQ. DR. SUPER DUTY IMPACT WRENCH



## 857/857-2

INDEX NO.	DESCRIPTION	REQ'D NO.	INDEX NO.	DESCRIPTION	REQ'D NO.
★ 1B	Housing Assembly { incl.8.9.10.46 ( 3 ) .48 }	1	24	Ball Bearing	1
2A	Throttle Valve Seat	1	25	Retainer	1
★ 3B	Throttle Valve Assembly ( incl.3B-1.3B-2 )	1	26	Cylinder	1
● 3B-1	Throttle Valve Pin	1	27	Cylinder Dowel	1
● 3B-2	Throttle Valve	1	29	Rotor Blade	6
4	Spring	1	30	Front End Plate	1
5A	Exhaust Deflector	1	31	Rear End Plate	1
6	Air Inlet	1	32	Gasket	1
7	Muffler Element	1	33	Motor Clamp Washer	2
● 8	Guide Tube	1	34	Hammer Frame	1
● 9	O-Ring	1	35	Hammer Pin	2
● 10	Reverse Valve Bushing	1	37	Hammer	2
11	O-Ring	1	38	Hammer Case	1
12	Reverse Valve	1	38A	Separator	1
13	O-Ring	1	39	Gasket	1
14	Spring	2	40	Bushing	1
15	Steel Ball	2	41	Screw	3
16	Reverse Valve Knob	1	43A	Standard Anvil ( for KI-857 )	1
17	Screw	2	43B	2" Extended Anvil ( for KI-857-2 )	1
18	Retainer	1	44	Socket Retainer	1
● 19	Trigger Pin	1	45	O-Ring	1
20A	O-Ring	1	● 46	Heli-Coil	3
★ 21A	Trigger Assembly ( incl.19 )	1	● 48	Grease Fitting	1
22	Rotor	1			
23	Ball Bearing	1	TK	Tune-Up Kit { 4.7.9.11.13.14(2).15(2).20A.23.24.25.29(6).32.39.44.45 }	

★ Must be Purchased in Assembly Set

● Recommended not to be purchased alone due to assembly difficulty

PA1-00857-4

20090409R1